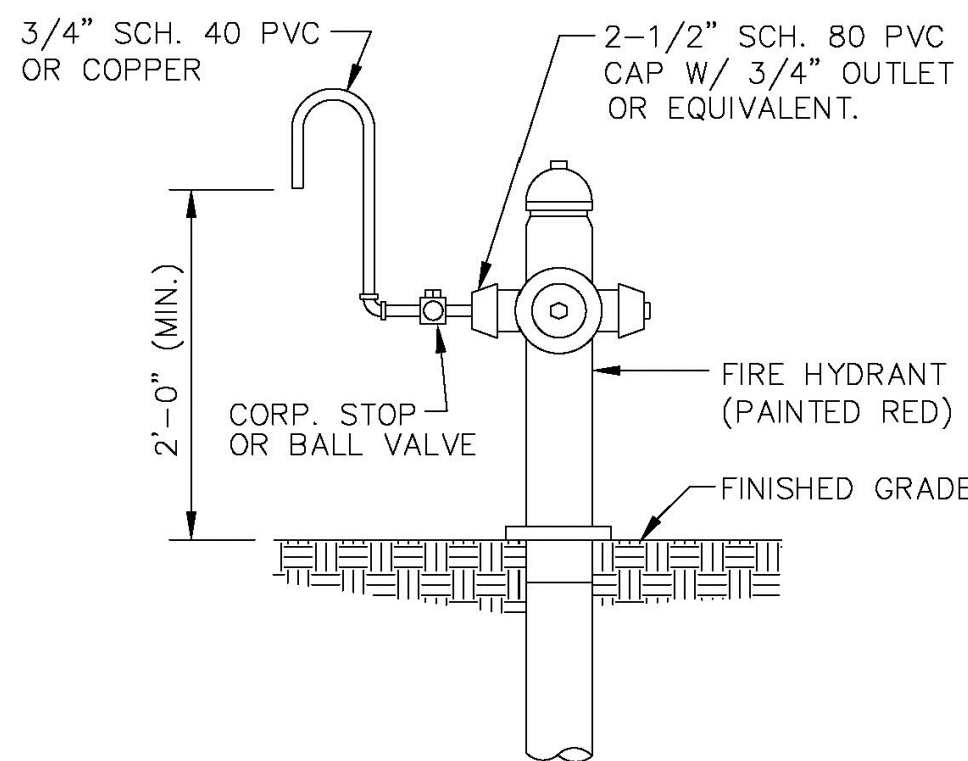


SAMPLE POINT (MAIN)

ALL D.I.P. TO BE PAINTED
BLUE ON TOP HALF OF PIPE.

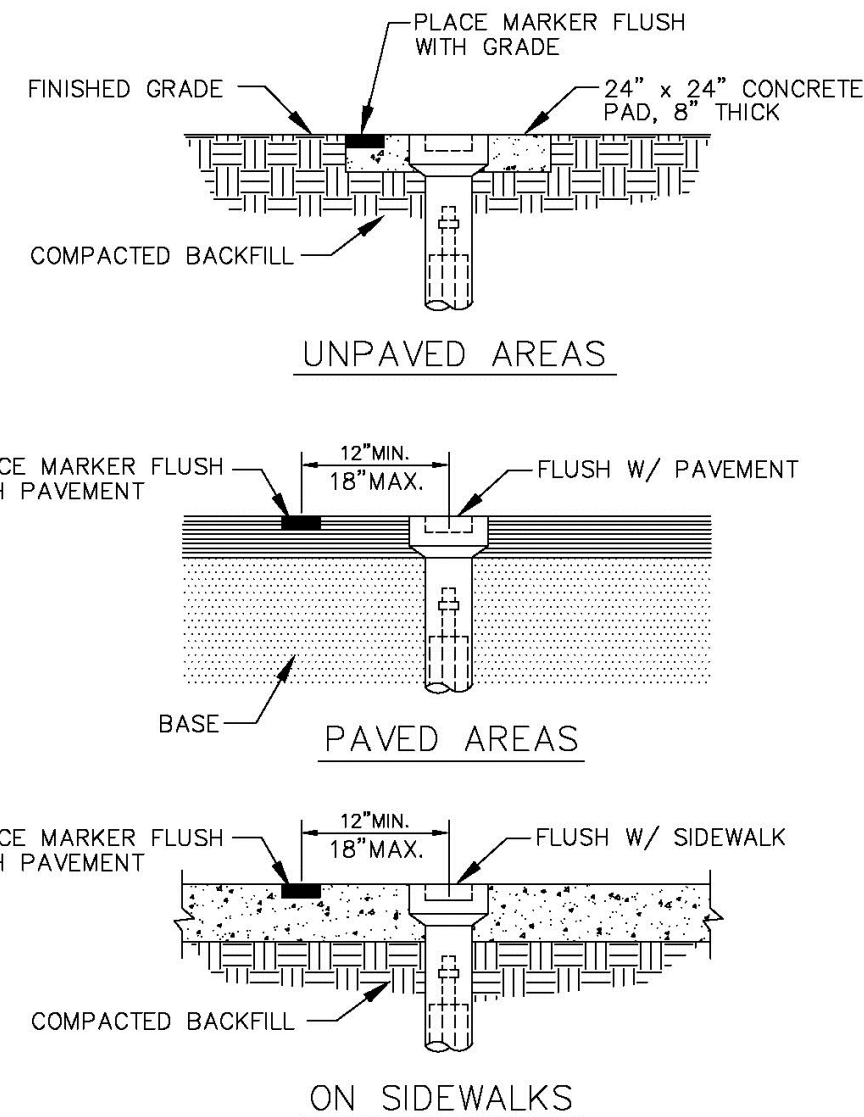
ENGINEERING STANDARDS 2025			
REVISIONS		ENGINEERING DIVISION CITY OF POMPAÑO BEACH	SAMPLE POINT (MAIN)
BY	DATE		
S.S.	04-2008		
SCALE: N.T.S.			DATE: MAY 2022 DWG. NO. 100-1



SAMPLE POINT (HYDRANT)

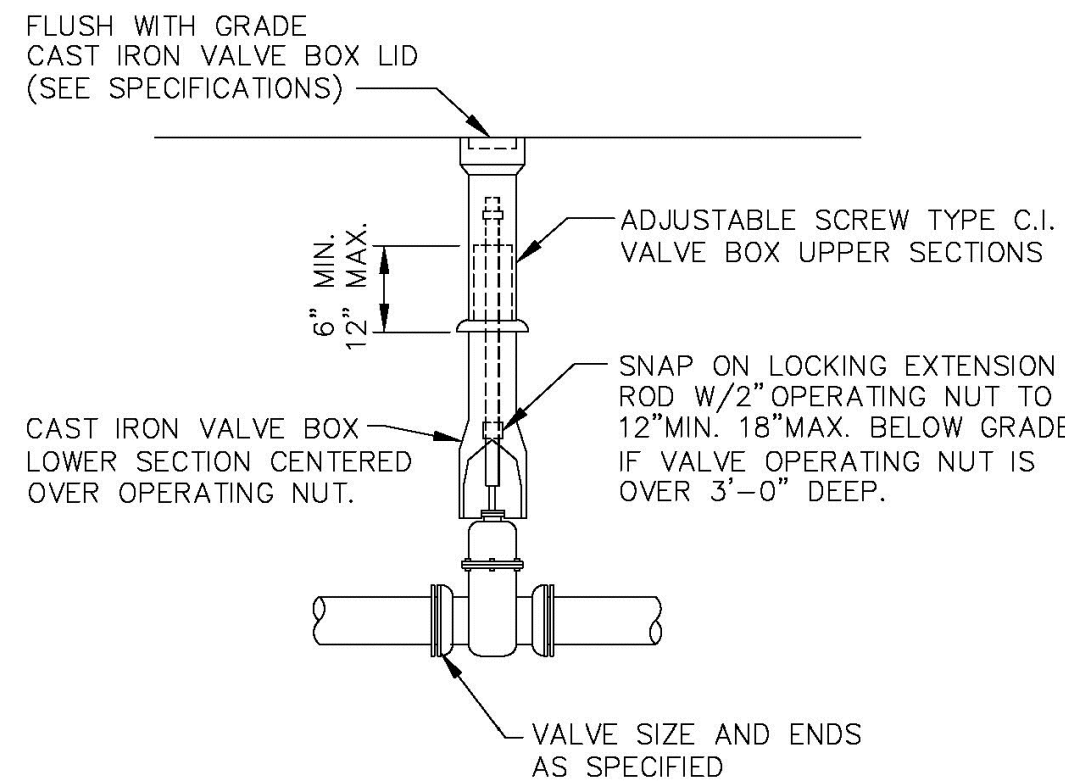
ALL POMPAÑO BEACH HYDRANTS SHALL BE PAINTED RED.

ENGINEERING STANDARDS 2025			
REVISIONS		ENGINEERING DIVISION CITY OF POMPAÑO BEACH	SAMPLE POINT (HYDRANT)
BY	DATE		
S.S.	04-2008		
SCALE: N.T.S.			DATE: MAY 2022 DWG. NO. 101-1



VALVE BOX SETTINGS

ENGINEERING STANDARDS 2025			
REVISIONS		ENGINEERING DIVISION CITY OF POMPAÑO BEACH	VALVE BOX SETTINGS
BY	DATE		
S.S.	04-2008		
SCALE: N.T.S.			DATE: MAY 2022 DWG. NO. 102-1

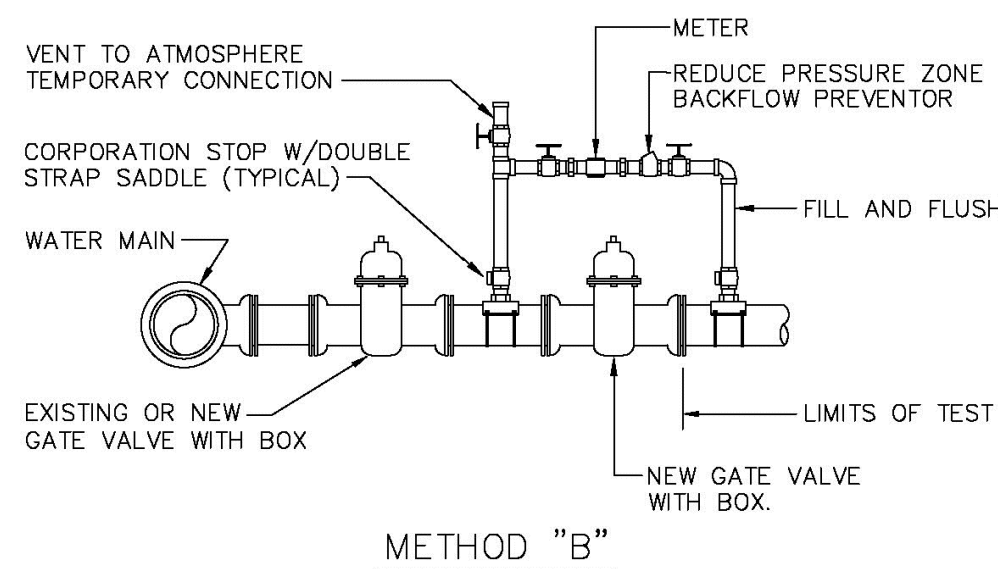


GATE OR PLUG VALVE SETTING

USE MEGALUGS AT ALL PIPE JOINTS

ALL D.I.P. TO BE PAINTED
BLUE ON TOP HALF OF PIPE.

ENGINEERING STANDARDS 2025			
REVISIONS		ENGINEERING DIVISION CITY OF POMPAÑO BEACH	GATE OR PLUG VALVE SETTINGS
BY	DATE		
S.S.	04-2008		
T.W.	11-2007		
SCALE: N.T.S.			DATE: MAY 2022 DWG. NO. 103-1



METHOD "B"

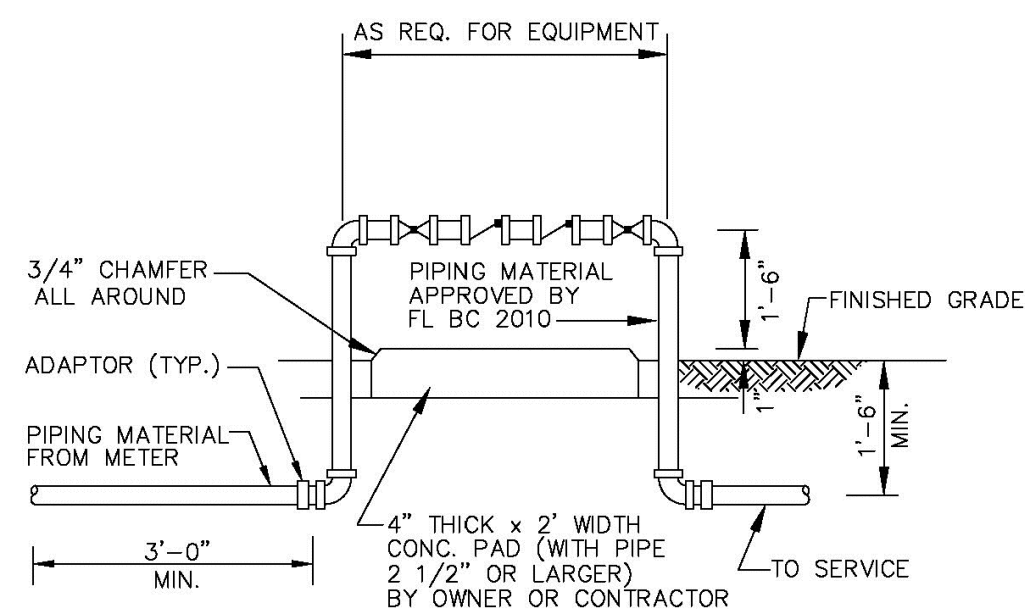
NOTES:

1. WATER MAIN TO BE PRESSURE TESTED AND DISINFECTED ACCORDING TO BROWARD COUNTY PUBLIC HEALTH UNIT REGULATIONS, AWWA, AND MUNICIPAL SPECIFICATIONS IN EFFECT.
2. BACTERIOLOGICAL TESTS ARE TO BE PERFORMED BY THE CONTRACTOR AND AN APPROVED TESTING LABORATORY.
3. REMOVE TEMPORARY CONNECTION AT SADDLE ON NEW MAINS AFTER FILLING AND FLUSHING HAS BEEN COMPLETED AND REPLACE WITH BRASS PLUG.
4. PROVIDE ALL NECESSARY THRUST BLOCKS OR OTHER RESTRAINTS.
5. FILLING AND FLUSHING LOCATIONS SHALL BE COORDINATED BY THE CONTRACTOR, ENGINEER, AND CITY.
6. VENT TO ATMOSPHERE SHALL REMAIN OPEN DURING ALL PHASES OF PRESSURE TESTING.
7. AFTER COMPLETION FILL AND FLUSH CONNECTION
8. USE MEGALUGS AT ALL PIPE JOINTS

FILLING AND FLUSHING CONNECTION

ALL D.I.P. TO BE PAINTED
BLUE ON TOP HALF OF PIPE.

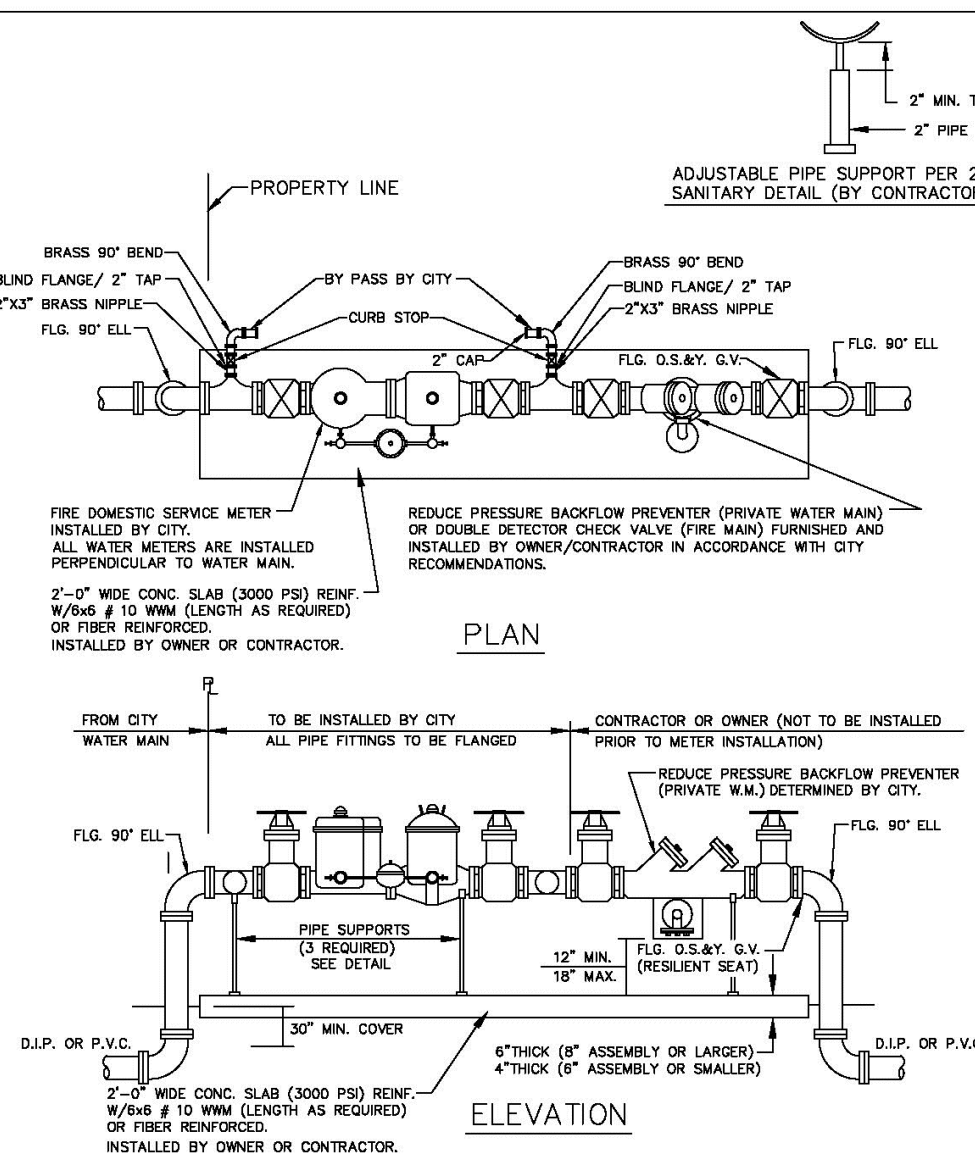
ENGINEERING STANDARDS 2025			
REVISIONS		ENGINEERING DIVISION CITY OF POMPAÑO BEACH	FILLING / FLUSHING CONNECTION
BY	DATE		
S.S.	04-2008		
T.W.	11-2007		
S.S.	01-2012		
SCALE: N.T.S.			DATE: MAY 2022 DWG. NO. 104-1



BACKFLOW PREVENTER

USE MEGALUGS AT ALL PIPE JOINTS 3" AND LARGER
PLEASE SEE METER INSTALL DIMENSION LIST ON STANDARD NO. 106-4
SMALL UNITS UNI-STRUT SUPPORT

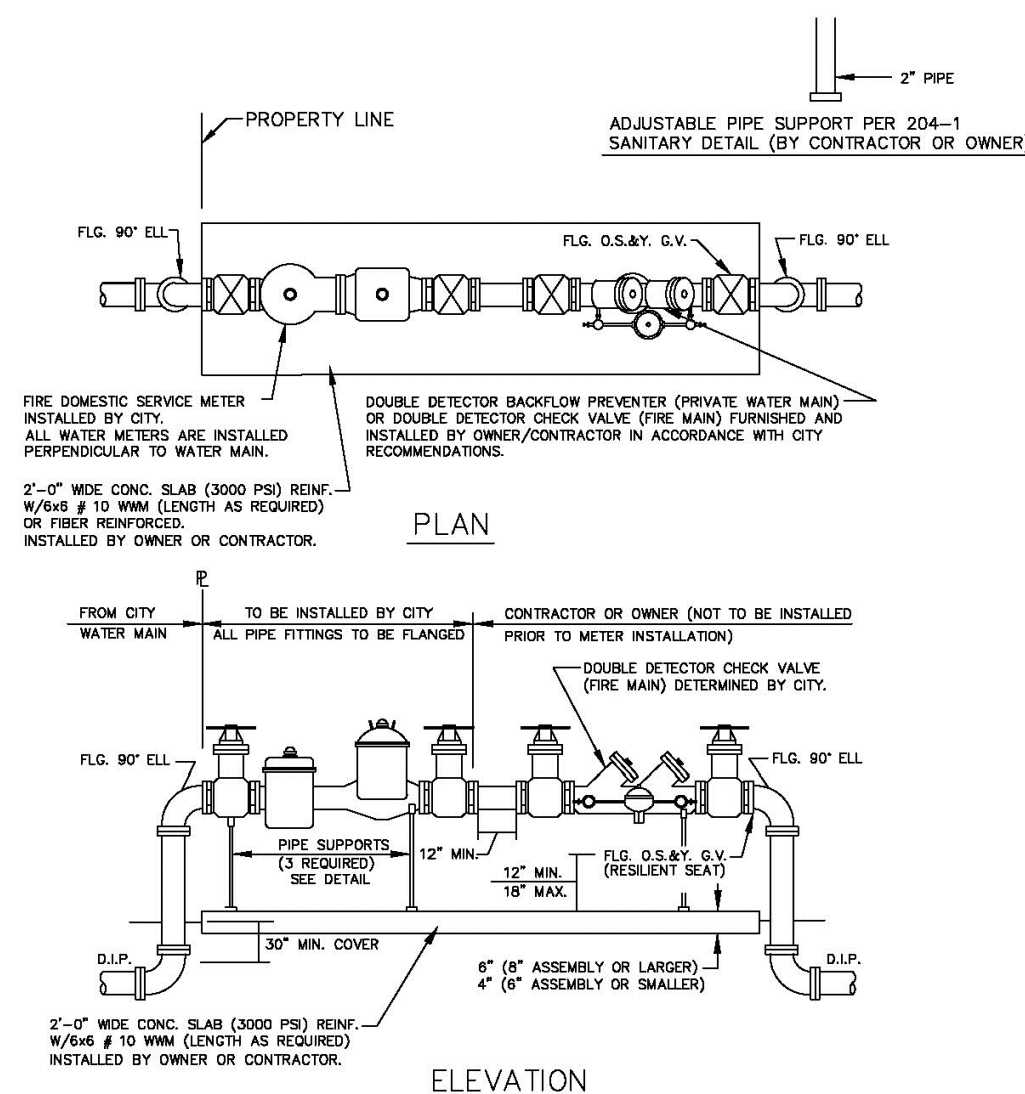
ENGINEERING STANDARDS 2025			
REVISIONS		ENGINEERING DIVISION CITY OF POMPAÑO BEACH	BACKFLOW PREVENTER
BY	DATE		
S.S.	05-2011		
T.W.	04-2008		
S.S.	03-2009		
S.S.	11-2012		
S.S.	01-2013		
SCALE: N.T.S.			DATE: MAY 2022 DWG. NO. 106-1

MASTER METER AND BACKFLOW DEVICE DETAILS
FIRE AND DOMESTIC COMBINED SOURCE

NOTES:

1. THE BACKFLOW PREVENTER FOR THE BY-PASS SHALL BE DDV OR RPZ.
2. PLEASE NOTE THAT WATER METERS 3" AND LARGER ARE SUBJECT TO AN APPROXIMATE ORDER LEAD TIME OF 60 TO 75 DAYS AFTER FULL PAYMENT. PLEASE CONTACT CUSTOMER SERVICE AT 854-786-4637 TO ARRANGE FOR METER PROCUREMENT AND INSTALLATION.
3. USE MEGALUGS AT ALL PIPE JOINTS
4. PLEASE SEE METER INSTALL DIMENSION LIST ON STANDARD NO. 106-4

ENGINEERING STANDARDS 2025			
REVISIONS		ENGINEERING DIVISION CITY OF POMPAÑO BEACH	MASTER METER AND BACKFLOW DEVICE
BY	DATE		
S.S.	05-2011		
S.S.	11-2012		
S.S.	12-2013		
S.S.	11-2016		
SCALE: N.T.S.			DATE: MAY 2022 DWG. NO. 106-2



FIRE ONLY METER AND BACKFLOW DEVICE DETAILS

NOTES:

1. THE BACKFLOW PREVENTER FOR THE BY-PASS SHALL BE DDV OR RPZ.
2. PLEASE NOTE THAT WATER METERS 3" AND LARGER ARE SUBJECT TO AN APPROXIMATE ORDER LEAD TIME OF 60 TO 75 DAYS AFTER FULL PAYMENT. PLEASE CONTACT CUSTOMER SERVICE AT 854-786-4637 TO ARRANGE FOR METER PROCUREMENT AND INSTALLATION.
3. USE MEGALUGS AT ALL PIPE JOINTS
4. PLEASE SEE METER INSTALL DIMENSION LIST ON STANDARD NO. 106-4

ENGINEERING STANDARDS 2025			
REVISIONS		ENGINEERING DIVISION CITY OF POMPAÑO BEACH	FIRE ONLY METER AND BACKFLOW DEVICE
BY	DATE		
S.S.	05-2011		
S.S.	11-2012		
S.S.	12-2013		
S.S.	11-2016		
SCALE: N.T.S.			DATE: MAY 2022 DWG. NO. 106-3

REVISIONS		
NO.	DESCRIPTION	DATE

PRELIMINARY PLAN
NOT FOR CONSTRUCTIONTHESE PLANS ARE NOT FULLY PERMITTED
AND ARE SUBJECT TO REVISIONS MADE
DURING THE PERMITTING PROCESS.RESPONSIBILITY FOR THE USE OF THESE
PLANS PRIOR TO OBTAINING PERMITS FROM
ALL AGENCIES HAVING JURISDICTION OVER
THE PROJECT WILL FALL SOLELY UPON THE
USER.

ISSUE DATE: 11/12/2025

DESIGNED BY: NW

DRAWN BY: FA

CHECKED BY: NW

BID-CONTRACT:

NILES T. WARRICK, P.E.
FLORIDA REG. NO. 94320
(FOR THE FIRM)

CLIENT

JADIAN IOS

PROJECT

951 SW 12th AVENUE
POMPAÑO BEACH FL

SHEET TITLE

WATER AND SEWER
DETAILSSHEET
NUMBER CU-501PROJECT
NUMBER 15427.00